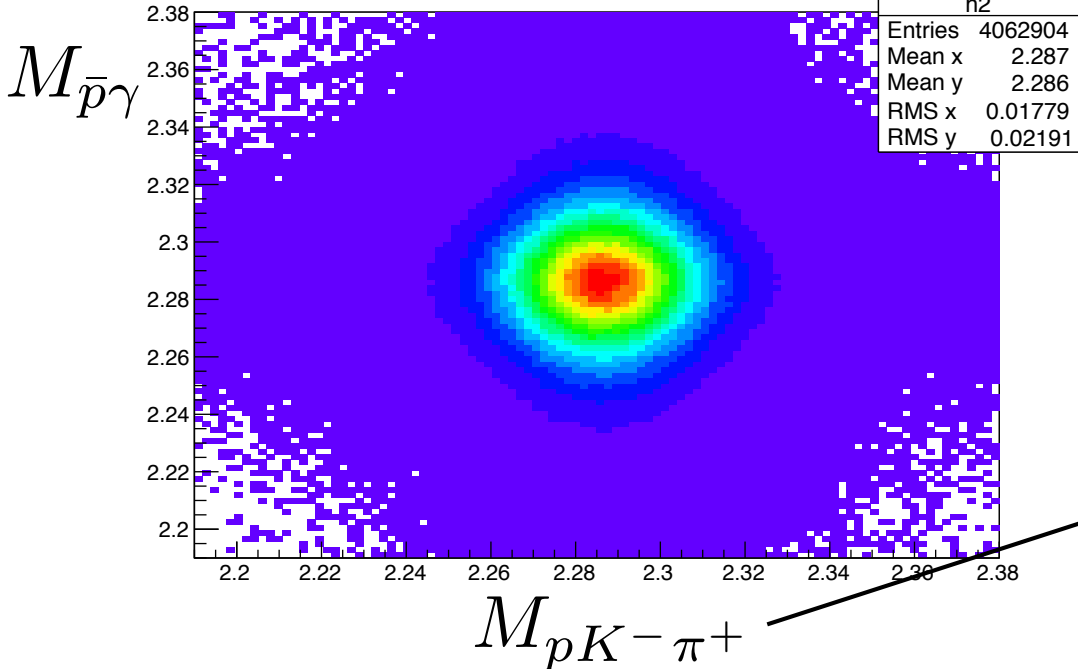


$$\bar{p} + p \rightarrow \Lambda_c^+ \Lambda_c^- \rightarrow pK^- \pi^+ + \bar{p}\gamma$$

1.

Imm:lpm {chi2<50}

@10.2 GeV/c



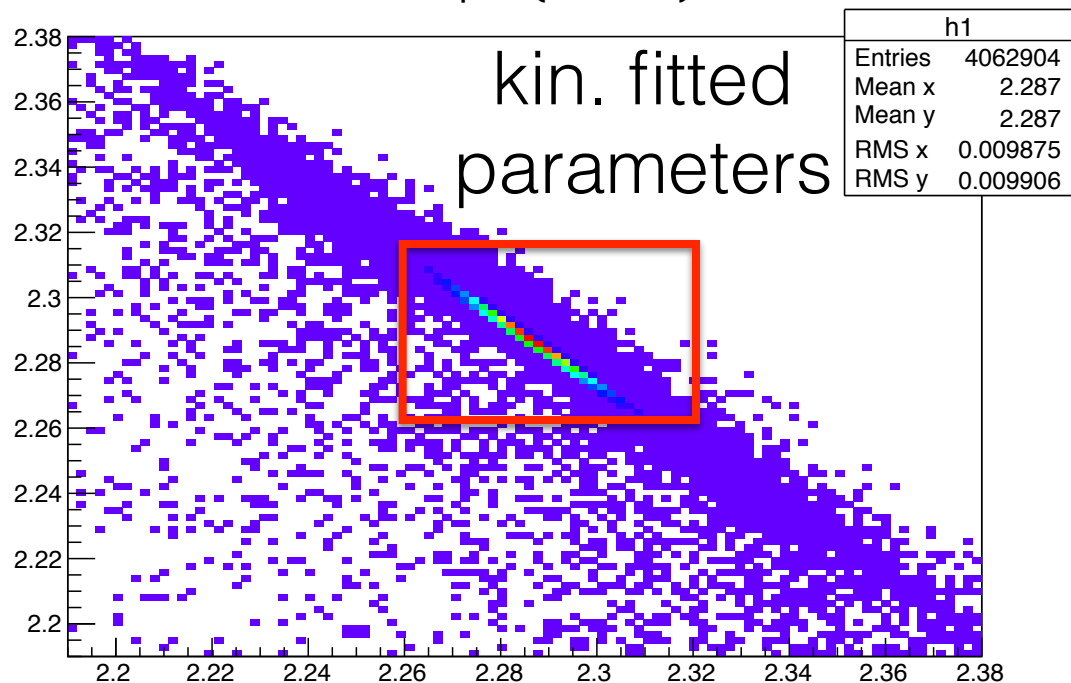
10⁷ MC events

resolutions:

15 MeV (no kin. fit)

9 MeV (kin. fit)

Imfm:lpfm {chi2<50}



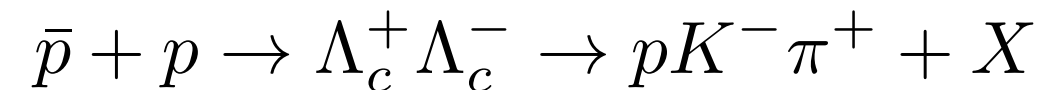
FSIM

full setup

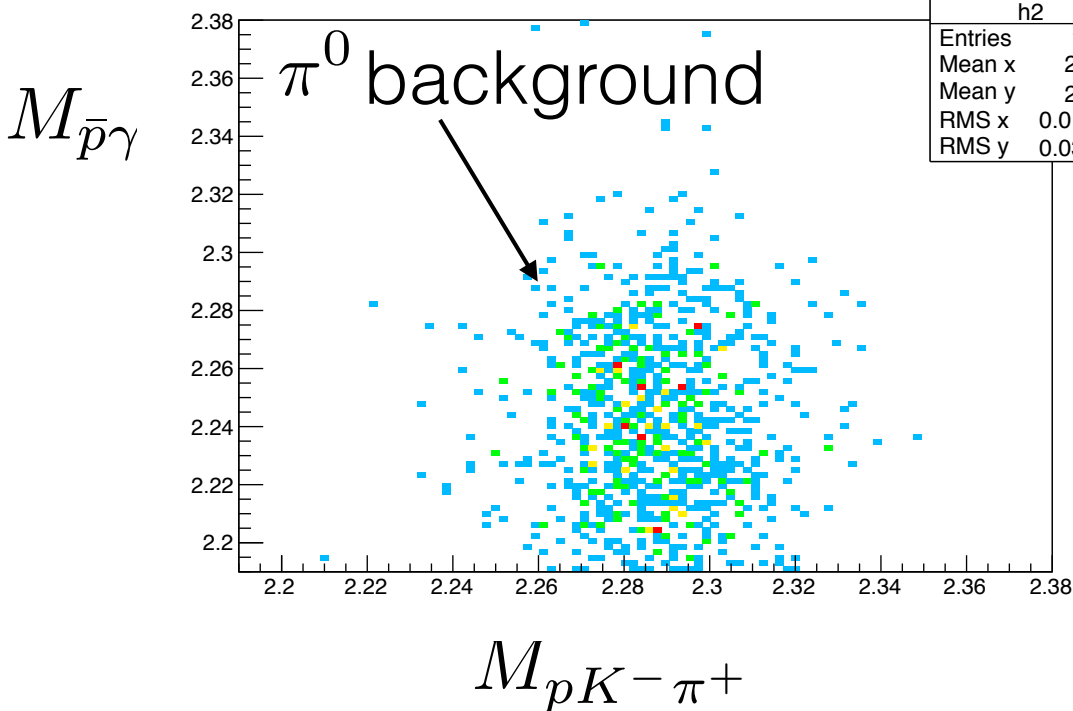
“loose” PID via DIRCs

40% efficiency

exclusive detection



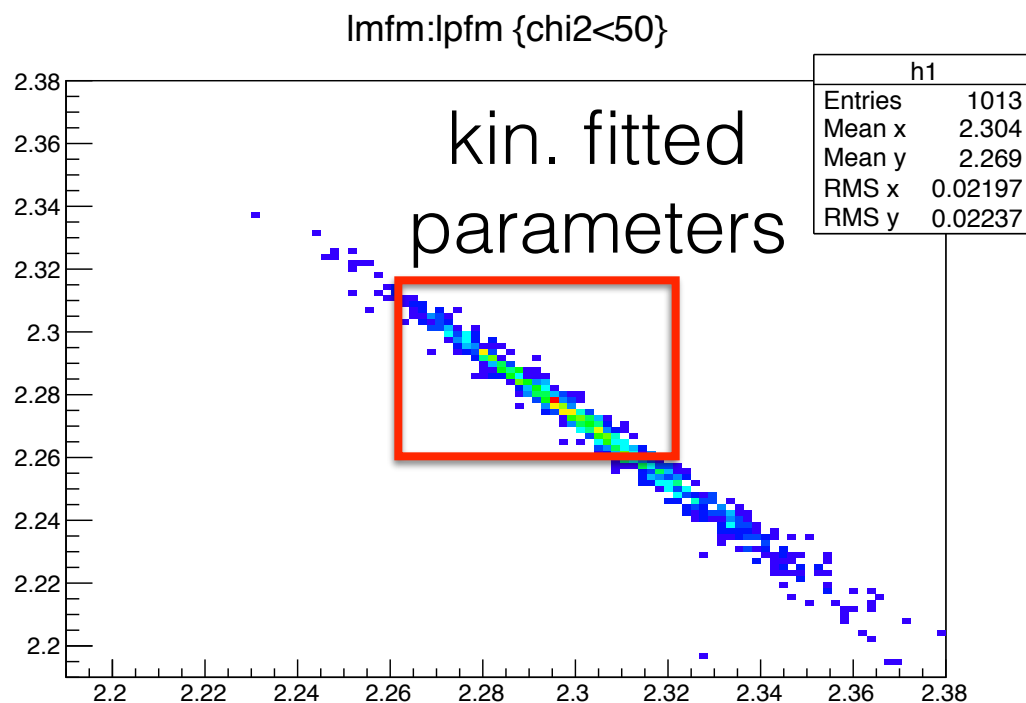
Imm:lpm {chi2<50}



@10.2 GeV/c
(X=pythia)

10^7 MC events

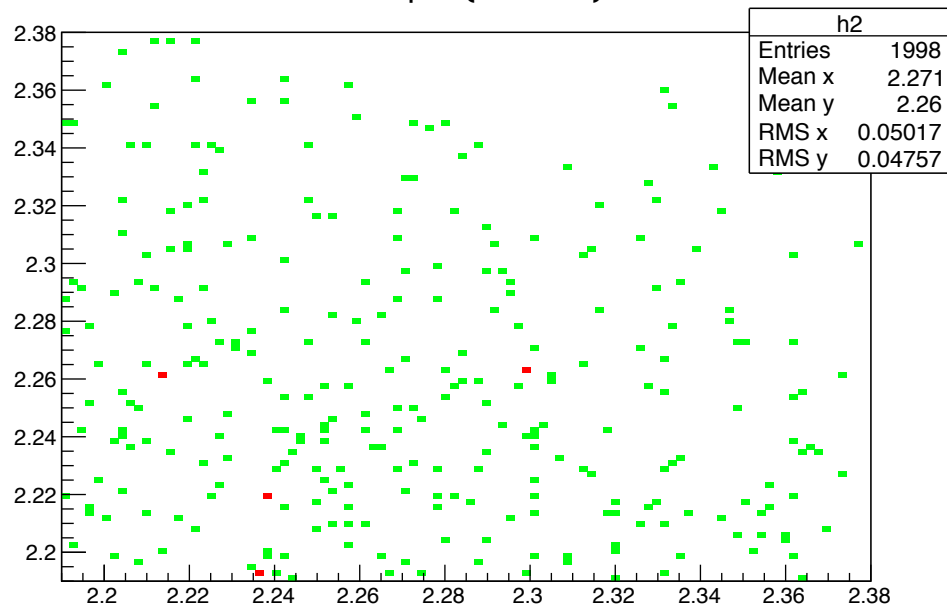
FSIM
full setup
“loose” PID via DIRCs
 6×10^{-5} suppression
(not optimized)
exclusive detection



DPM

 $M_{\bar{p}\gamma}$

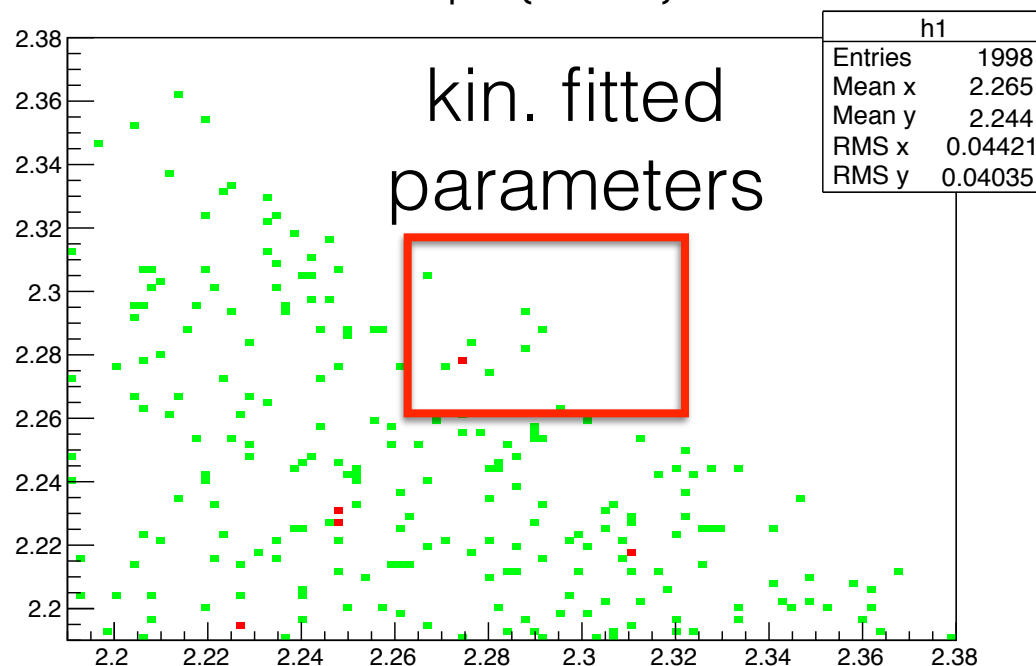
Imm:lpmm {chi2<50}



@10.2 GeV/c

 10^8 MC events $M_{pK-\pi^+}$

Imfm:lpmm {chi2<50}

kin. fitted
parameters

FSIM

full setup

“loose” PID via DIRCs

 10^{-7} suppression

(not optimized)

exclusive detection